



LINEN & UNIFORM

SINCE 1915

Work Hard, Be Prepared, Look Good

PRODUCT CATALOG

Linen
Uniforms
Facility Services

www.centurylinen.com



HISTORY OF COMPANY

100 years since its founding, Century Linen & Uniform (formerly Robison & Smith) is owned and operated by the Smith family. Century provides linen service to healthcare operations, linen service and uniform service to hospitality businesses (restaurants and hotels), and linen and uniform service to



ADVANCEMENT & GROWTH OVER THE YEARS

Since then, the company continued to grow, taking on more commercial work, especially healthcare, such as hospitals and nursing homes. The company later



industrial customers all over New York State. We also offer floor mat service, facility services, restroom supplies, and more. Our

plants are located in Gloversville, NY (healthcare) and Johnstown, NY (hospitality/industrial) with Service Centers in Albany, NY, Syracuse, NY and Potsdam, NY.



SIMPLE BEGINNINGS 100 YEARS



Century Linen & Uniform is one of the largest and most up-to-date commercial laundry, linen and uniform service operations in the United States. We specialize in healthcare linen services, table linens, dust

control and uniform rental services to restaurants, hotels, motels, and commercial and industrial business.



Founded in 1915, by Frank Robison and Willard Smith, as Robison & Smith, Century Linen & Uniform found its start by picking up household laundry in Amsterdam, NY, traveling by horse and buggy. The business flourished and grew, expanding into commercial laundry. In October 1947, the company lost Mr. Robison in a tragic accident. The Smith family then acquired full ownership of the company from Mr. Robison's family, keeping the traditional name in the founders' honor.

expanded further, providing wash services to restaurants and hotels.

Over the years, market demands transitioned from wash service to linen rental – meaning Century owns the linen and provides weekly rental and exchange of linen to our customers. Today, over 90% of our work is linen and uniform rental service. The other 10% being composed of processing COG (Customer Owned Goods), dry cleaning, and coin operated Laundromats.



FINDING WHAT OUR CUSTOMERS NEED

Our current business is made up of approximately 90 percent rental service, with the other 10 percent encompassing, coin-operated laundries, dry cleaning, and processing customer owned goods.



Each week our high-tech, automated plants are capable of processing more than 700,000 pounds of laundry with exceptional efficiency and affordable rates.



CONTENT



LINEN & UNIFORM

SINCE 1915

Work Hard, Be Prepared, Look Good

WHY CHOOSE US?

We understand that we provide an important service that needs to be really easy and reliable for our customers. After safety, we train our team to focus on quality, accuracy, and great customer service to "deliver cleanliness" and set us apart. We're professional, hard working, and local so we can provide fast solutions and service that is second to none!

Richard C. Smith

Table Linen	4 5 6
Culinary Uniforms	7 8
Food Processing Uniforms	9
Aprons / Towels	10
100% Cotton Uniforms	11
Crew Shirts / Industrial Stripe Shirts	12
Micro Check Shirts / Motorport Shirts	13
Industrial Uniforms	14 15
Misc Shirts / Polos & T-Shirts	16 17
Pants & Jeans	18
Womens Industrial	19
Outerwear	20
Hi- Visibility / Enhanced Visibility	21
Flame Resistant uniforms	22
Mats / Facility Services	23
Healthcare	24 25
Bed Linen	26

Be social with us!



Matt Smith

4th Generation, VP

Richard Smith

3rd Generation, CEO/Pres

CENTURY LINEN & UNIFORM

542 N. Perry St
Johnstown, NY 12095

1-800-721-7648 | www.centurylinen.com



Diners prefer table linens and that is what Century delivers. Clean, crisp linen creates a feeling of luxury and a perfectly natural atmosphere for both casual and fine dining. When you give your customers what they like, they will come back again, and again. Below are some of the options available through our linen rental program that can help you impress your customers.



OUR SPUN POLY NAPKIN

The consummate standard for any restaurant, our Spun Poly napkin is our most economical choice & is offered in the most colors; making it our most popular napkin. Spun Poly has a soft, but definitive feel on the table and is so soft to the touch. This high end fabric feels as soft as cotton but yet is 100% Spun Polyester. Spun Poly napkins are not only very soft to the touch but great for all types of napkin folding styles.



Available napkin colors subject to change. Ask your representative for colors available
(Pictures might not represent true colors)





OUR BISTRO NAPKIN

The bistro napkin, known for the cheerful strip that runs down the middle, has restaurant owners using its carefree vibe to cultivate a friendly ambiance in their restaurants from formal dining rooms to street-side cafes. Available as beautifully coordinating napkins or separately as accents to existing linens, Stripe Bistro napkins are yarn dyed with a classic stripe design. Available stripe colors are subject to change.

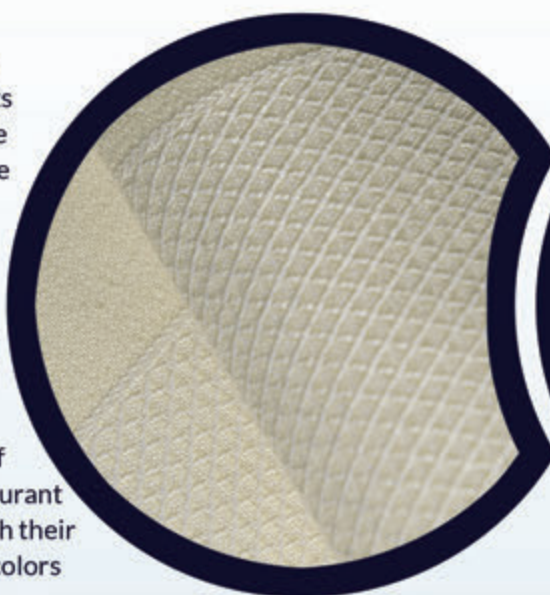




REVERSE BISTRO NAPKIN

For the restaurateur determined to create a distinctive, memorable place, there really is no substitute for our reverse stripe bistro napkin. With its new fresh look, it can uplift your interior and give your restaurant a face-lift for just a few cents per meal. 100% spun polyester making it soft to the touch & a distinctive feel to the table. Available In Ebony, Red, Royal Blue, Sage, And Sandalwood Color With White Stripes (Colors available subject to change)

For the discriminating restaurateur who wants to offer their guests the finest dining experience they can & don't find price an objective, we offer our Dolce Linen Napery. 100% spun polyester with the feel of cotton, your guests will appreciate the luxurious experience of their visit to your restaurant & will rush to share with their friends. Napkin styles colors available subject to change.



DOLCE LINEN

With our tablecloths, you're investing in atmosphere. Our tablecloths look and feel great, help reduce noise, and contribute to a welcoming experience, ensuring every patron has a pleasant experience. 8 out of 10 consumers say table linens create a better experience. With our wide selection of beautiful colors to choose from, there's sure to be a match for every setting.

COLORS:

- White • Black • Ivory
- Burgundy • Green • Cadet Blue
- Gold • Red • Sandalwood

SIZES:

- 52 x 52 • 61 x 61
- 71 x 71 • 85 x 85
- 52 X 114

Not all color / size combinations available

TABLE CLOTH





CULINARY UNIFORMS

When it comes to first impressions, appearances make a big difference. This is extra true in the restaurant world! Although uniforms look different at each restaurant, there's no denying that appearances are important! The right uniforms can define your brand, mark employees, inspire employee pride, create a professional environment, and inspire customer confidence Century have been helping their customers, impress their customers since 1915! If you don't have a program for your restaurant, let us show you how a custom program can benefit you! -If you already have a uniform program - let us show you how we can do it better!



BLACK CHEF COAT

Fabric: 6.5 oz Twill,
Permanent Press Blend: 100%
polyester Finish: Soil release &
wickable finish
Collar: Stand up collar
Cuff: Vented cuffs
Pocket: One left breast and left
arm thermometer pocket



WHITE CHEF COAT

Fabric: 7.0 oz. plain weave
Blend: 100% polyester
Finish: Soil release & wickable
finish Collar: Stand up collar
Cuff: Vented cuffs
Pocket: One left breast and left
arm thermometer pocket
Closure: Double



GARNISH CHEF COAT

Fabric: 7 oz. Twill, 65% Polyester
35% Combed
Cotton Finish: Pre-shrunk and
Pre-cure
Closure: Double-breasted, two
rows of five black pearl buttons
Collar: Stand up collar
Cuff: Vented cuffs Pocket: One



EIGHT KNOT BUTTON CHEF COAT

Fabric: 7 oz. Twill,
65% Polyester/35%
Cotton blend Finish:
Pre-shrunk, soil
release, wickable
finish Closure:
Double-breasted,
eight knot buttons



TEN KNOT BUTTON CHEF COAT

Stand-up collar ° Left chest
pocket ° Thermometer
pocket on left sleeve °
Clean-finish vented
cuffs ° 30" back length
on size medium
65% Polyester
35% Cotton Twill

KITCHEN SHIRTS



Constructed with 4.6 oz. 65/35 poly/cotton fabric, this cook shirt is solid white with snap closures. This cook shirt also includes a left chest patch pocket. Designed to work as hard as you do, our cook shirt is the perfect garment for back of house Available.

White w/ pocket | Black w/ pocket | White pocketless

PANTS



STRIPED BAGGY CHEF PANT

- 100% Polyester
- Full-elastic waist with drawstring
- Zipper fly
- Two side seam pockets
- Two back patch pockets



SNAP WHITE CHEF PANT

- 65/35 Blend
- Snap closure and zipper fly
- Two side seam pockets
- Two back patch pockets



BLACK BAGGY CHEF PANT

- 100% Polyester
- Full-elastic waist with drawstring
- Zipper fly
- Two side seam pockets
- Two back



CHECKED CHEF PANT

- Snap closure & zipper fly° Side-elastic waist°
- Two front slant pockets° Two patch hip pockets 100% Spun Polyester Plain Weave



SNAP BLACK CHEF PANT

- 65/35 Blend
- Snap closure and zipper fly
- Two side seam pockets
- Two back patch pockets

FOOD PROCESSING UNIFORMS

When food is your business, product safety is a non-negotiable. Century Linen & Uniform launders all of our Food Industry garments according to Hazard Analysis & Critical Control Points (HACCP) specs to help prevent contamination within food manufacturing facilities.

FOOD PROCESSING UNIFORMS



GRIPPER-FRONT SHORT BUTCHER COAT

five-gripper front, one exterior chest pocket and two lower exterior pockets 65% Polyester 35% Cotton Twill



SPECIALIZED POLYESTER WORK SHIRT

Seven-gripper front SS, No Pocket LS, No Pocket COLOR: MB, WH



SPECIALIZED POCKETLESS WORK SHIRT

Two-piece convertible collar with sewn-in stays ° Seven stainless steel gripper closures° 32 ½" back length on size medium 4.25 oz. Poplin, 65% Polyester/35% Cotton SHORT SLEEVE & LONG SLEEVE COLOR: LA, LB, LT, NV, WH



GRIPPER-FRONT BUTCHER COAT

ONE-PIECE COLLAR WITH NOTCHED LAPEL ° SIX GRIPPER FRONT CLOSURE ° SIDE VENT OPENINGS ° ONE EXTERIOR CHEST POCKET AND TWO EXTERIOR LOWER POCKETS °
*AVAILABLE W/ NO POCKETS 65% POLYESTER/35% COTTON TWILL COLOR: WH
*ALSO AVAILABLE IN 100% SPUN POLYESTER



SPECIALIZED WORK PANT

HOOK AND- EYE CLOSURE ° SLACK-STYLE FRONT POCKETS AND SET-IN HIP POCKETS ° NO BUTTONS ON GARMENT 7.5 OZ. TWILL, 65% POLYESTER 35% COTTON COLOR: WH
*ALSO AVAILABLE 7.5 OZ. 100% SPUN POLYESTER



KNIT CUFF BUTCHER COAT

BUTCHER COAT WITH KNIT CUFFS ONE-PIECE, LINED COLLAR WITH NOTCHED LAPEL ° SIX-GRIPPER FRONT ° TWO PIECE SLEEVE FOR BETTER FIT ° KNIT CUFF ° NO POCKETS ° NO SIDE VENTS ° 100% SPUN POLYESTER PLAIN WEAVE COLOR: LB, NV, TN, WH

APRONS



BIB APRON - NO POCKETS

The consummate standard in apron design is an essential part of any kitchen. Comes with straight arm holes and is reinforced at strings. Strings are 40 inches long.



BISTRO APRON - TT34

7.5 oz. Twill. 65% Polyester 35% Cotton. Wrinkle resistant. Extra long ties across top of apron. Large rectangular pocket with divider for pencil.



4-WAY BAR APRON

This is a 34" long length, bar or pub style apron made from 100% Spun Polyester. It has reinforced bar tack at the 40" strings. Color: White
Fabric: 100% Spun Polyester



WAIST APRON

Size: 22" inches width x 24" inches long with adjustable straps imprint area: 7" x 9" Features: 3 front pockets Material: 7 OZ. Poly-Cotton

TOWELS

"Ask your Century Rep for other toweling products available"



SHOP TOWELS

Shop Towels are designed for tough messes like grease, oil, sticky liquids, & spills. 100% cotton 20x20



BAR TOWELS

Professional duty bar towels, designed for deep cleaning in restaurants and bars. Made of 100% cotton



KITCHEN TOWELS

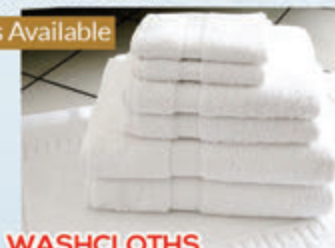
Our Kitchen Towels are 100% Cotton, low-lint, for wiping, cleaning and kitchen use.



MICROFIBER TOWELS

Microfiber Towels are lint free and long lasting, for use as bar and table cleaning.

Luxury Versions Available



WASHCLOTHS

100% cotton terry is absorbent and provides added traction for scrubbing. Color: White. 12x12

HAND TOWELS

Soft, rich hand towels are very absorbent. Color: White. 16x27

BATH TOWELS

Absorbent towels provide both comfort and drying power. 100% cotton terry. Color: White. 24x48



HAIR SALON TOWEL

These Premium cotton towels are perfect for all of your hair care and beauty needs



POOL TOWEL

Dry off in comfort with the luxurious feel of our pool towel

GRILL PAD

Clean your grill area without ruining towels. Cotton terry fabric with cotton insert



WRINKLE RESISTANT COTTON WORK SHIRT

Easy-care finish °

Two-piece collar with sewn-in stays °

Seven-button

front including button at neck °

Two button-thru, hex-style pockets

with bartacked pencil stall on left pocket

6 oz. Twill, 100% Wrinkle-resistant Cotton

SHORT SLEEVE (Reg) S - 4X L, (L ong) L - 4X L

LONG SLEEVE (Reg) S - 5 X L, (L ong) L - 4X L

COLOR: DN, GG, KH, LB, NV, OR, PB, SG, WH



WRINKLE-RESISTANT COTTON WORK PANT

Easy fit ° | Folder-set waistband with outlet and button | closure ° Slack-style front pockets and two set-in hip pockets; left pocket has button closure | 8.5 oz. Preshrunk Twill, 100% Wrinkle-resistant Cotton

COLOR: BN, CH, DN, GG, KH, NV, SG

CREW SHIRT

The Crew Shirt may be new to you, but it's no stranger to hard work. Field-tested for durability and comfort, it's already been proven to have everything it takes to get the job done right. The body and lower portion of sleeves are darker to help hide stains, the straight hem can be worn tucked in or out, its covered buttons keep a car's perfect paint job polished and protected. Sleeve Pocket for those keeping pens, gauges and small tools within reach. & its Ripstop Fabric is lightweight, extra durable and 75% stronger than other poplin workwear fabrics.



4.25 oz. Ripstop, 65% Polyester / 35% Cotton

BC black/charcoal, CR charcoal/royal, NG navy/grey, BR black/red,

CG charcoal/grey, CO charcoal/orange, BL black/limegreen

INDUSTRIAL STRIPE SHIRT

A vintage classic for any garage. Sleek stripes and a lined collar add style to a job done right. With multiple performance features, you stay looking great no matter how much oil and grease are thrown your way and your shirt will, too.



1. GK GREEN /KHAKI

2. GI CHARCOAL WITH BLUE / WHITE 2.

3. BS PETROL BLUE / NAVY

4. IC BLUE / BROWN / WHITE

5. GW WHITE / GREEN

6. KN KHAKI / NAVY

7. BW GM BLUE / WHITE

8. CW WHITE /CHARCOAL

9. CR CHARCOAL

RED / WHITE

10. WB BLUE /WHITE

11. RN NAVY / RED

12. BB LIGHT BLUE / NAVY

13. EX GREY / BLUE



MICRO-CHECK WORK SHIRT

Superior color retention, soil release and wickability °
Two-piece, lined collar with sewn-in stays ° Seven tortoise shell buttons °
Two button-thru, hex-style pockets with bartacked pencil stall on left pocket
3.75 oz. Poplin, 65% Polyester / 35% Cotton

DN denim blue GB blue / charcoal KB khaki / black

MOTORSPORTS SHIRT

Serious motorsport styling and streamlined fit mean you're ready for anything, either on the track or in the garage superior color retention, soil release and wickability ° Banded collar with sewn in stays °
Contrast shoulders, side panels and inner collar band

4.25 oz. Poplin, 65% Polyester / 35% Cotton
BG black/silver , NP navy/ postman blue , RN red/navy,
CB charcoal/black, CR charcoal/royal





INDUSTRIAL SOLID WORK SHIRT

superior color retention, soil release, durable press and wickability °

Two-piece, lined collar with sewn-in stays ° Six-button front with gripper at neck ° Two button-thru, hex-style pockets with bartacked pencil stall on left pocket

4.25 oz. Poplin, 65% Polyester 35% Cotton

INDUSTRIAL UNIFORMS

15

INDUSTRIAL UNIFORMS



MEN'S INDUSTRIAL WORK PANT

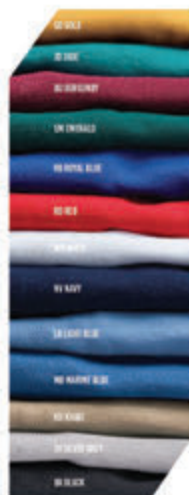
Superior color retention, soil release and wickability ° Bend, stretch and twist in complete comfort ° Easy fit ° Self-fabric waistband ° Two front pockets and two set-in hip pockets, left pocket has button closure 7.5 oz.

Twill, 65% Polyester / 35% Cotton



BLENDED SOFT KNIT SHIRT

Durable press finish for a clean, crisp appearance and less ironing ° Soil release with wickable finish ° Superior color retention ° Superior shrinkage control ° Rib knit fashion collar ° Three tortoise shell buttons with lined placket 6.5 oz. Lacoste Knit, 50% Cotton 50% Polyester WITH POCKET (Reg) S-5XL COLOR: BK, KH, LB, NV, RB, RD, WH WITHOUT POCKET (Reg) XS-5XL COLOR: BK, BU, EM, GO, JD, KH, LB, MB, NV, RB, RD, SV,



PERFORMANCE KNIT FLEX SERIES - ACTIVE POLO



Snag-proof and wrinkle-resistant fabric with grid texture ° Superior color retention and wickability ° Mesh fabric on the underarm gussets and back of garment ° Straight hem with side vents ° Underarm gussets ° Dyed-to-match 4-eye buttons ° Set-in, hemmed sleeves ° Inset, double compartment sleeve pocket ° Internally reinforced shoulder seams ° Double-stitched DuraSeams ° Convertible collar ° Tagless label 5.3 oz. Poly Performance Fabric, 100% Polyester (Reg) S-6XL COLOR: BK, GY, MB, NV, RD, RB, TN, WH

PERFORMANCE KNIT CONTRAST TRIM SHIRT

Superior color retention and shrinkage control ° Rib knit collar with ¼" contrast stripe ° Three tortoise shell buttons with contrast-lined placket ° One hemmed, spade-style pocket with triangular bartacks 5.5 oz. Knit, 50% Polyester / 50% Cotton (Reg) S-4XL COLOR: BN-Burg/navy TB-tan/black, HT-hunter/tan, NB-navy/burg, GB-grey/black





SPECIALIZED POCKETLESS KNIT 50/50 BLEND PIQUÉ SHIRT

Soil release with wicking properties° Superior color retention and shrinkage control°

Rib knit fashion

collar° Three-gripper front with lined placket°

Hemmed sleeves° Pocketless 5.5 oz. Piqué,
50% Polyester / 50% Cotton (Reg) S-4XL

COLOR: LB, NV, WH



EXECUTIVE OXFORD DRESS SHIRT

Soft, easy-care finish with wrinkle resist, soil release and wickable finish° Two-piece, lined, banded, button-down collar° Seven-button front° One hemmed, spade-style pocket with triangular bartacks° Two-piece yoke° Box-pleated back° Tailored sleeve placket on long sleeve style° 4.75 oz. Yarn-dyed Oxford, 60% Combed Cotton 40% Polyester SHORT SLEEVE Neck - (Reg) 14.5 - 22.5, (Long) 15.5 - 21.5 LONG SLEEVE Neck - (Reg) 14.5 - 21.5

COLOR: WH white, GS grey / white st, GY solid grey, BS blue white stripe, LB light blue, FB french blue



POPLIN DRESS SHIRT

Two-piece, lined, banded, button down collar° Seven wood-tone button front° Double-pleated sleeve with tailored placket and cuff on long sleeve style°

Box-pleated back° Longer length°

4.25 oz. Poplin, 65% Polyester / 35% Cotton
SHORT SLEEVE (Reg) S - 5 X L, (Long) L-2 X L
LONG SLEEVE (Reg) S-5XL

COLOR: BY, BK, RB, KH, RD, NV, SV, WH, LB



T-SHIRT

5.6-ounce, 50 cotton/50 poly
DryBlend moisture-wicking properties
Heat transfer label
Seamless double-needle 7/8" collar
Double-needle sleeves and hem
Taped neck and shoulders, tagless

Ash	Azalea	Black	Carolina Blue	Daisy
Dark Heather	Electric Green	Forest	Gold	Heliconia
Irish Green	Jade Dome	Kelly Green	Light Blue	Light Pink
Lime	Maroon	Navy	Orange	Orchid
Purple	Red	Royal	Sand	Sapphire
Sport Grey	Tennessee Orange	Texas Orange	White	

**CARGO PANT**

UTILITY STYLE CARGO PANTS OFFER AN EASY FIT, SLACK-STYLE FRONT POCKETS AND TWO SET-IN HIP POCKETS; LEFT POCKET HAS BUTTON CLOSURE, TWO BELOW CARGO POCKETS WITH POCKET FLAPS AND SNAP CLOSURES BLEND: 65% POLYESTER 35% COTTON FABRIC: 7.5 OZ. TWILL

COLOR: BLK, NAVY, KHAKI, CHARC

CARGO SHORT COLOR: BLK, NAVY, KHAKI

**RELAXED FIT JEAN**

RELAXED FIT WITH TRADITIONAL RISE SITS AT THE NATURAL WAIST RELAXED SEAT AND THIGH SLIGHTLY TAPERED LEG FITS OVER WORK BOOTS DEEP FRONT POCKETS 13.75 OZ. HEAVYWEIGHT DENIM, 100% COTTON

COLOR: BW-BLACK PREWASHED, SW-STONEWASH, PW-PREWASHED INDIGO

**LOOSE FIT CARPENTER JEAN**

LOOSE FIT WITH UPDATED RISE SITS SLIGHTLY BELOW THE NATURAL WAIST FULL CUT THROUGH THE SEAT AND THIGH * STRAIGHT LEG FITS OVER THE TOP OF WORK BOOTS TWO DEEP, SCOOP-FRONT POCKETS AND TWO OVERSIZED HIP POCKETS * DOUBLE RULE POCKET ON RIGHT LEG, HAMMER LOOP ON LEFT LEG 13.-5 OZ. HEAVYWEIGHT DENIM, 100% COTTON **COLOR:** PW-PREWASHED, SW-STONEWASHANT

**CELL PHONE POCKET PANT**

TRADITIONAL EASY FIT* FOLDER SET WAISTBAND WITH OUTLET AND BUTTON CLOSURE FOR A COMFORTABLE FIT * SLACK STYLE FRONT POCKETS AND TWO SET-IN HIP. POCKETS; LEFT POCKET HAS BUTTON CLOSURE * SPECIALLY-DESIGNED POCKET WITH CONCEALED CLOSURE ON SIDE SEAM FOR EASY ACCESS AND COMFORT 7.5 OZ. TWILL, 65% POLYESTER / 35% COTTON **COLOR:** BK, CH, KH, NV

**PLEATED WORK PANT**

CLASSIC SILHOUETTE WITH DOUBLE FRONT PLEATS FOLDER-SET WAISTBAND WITH OUTLET AND BUTTON CLOSURE * SLACK-STYLE FRONT POCKETS AND SET-IN HIP POCKETS; 7.5 OZ. TWILL, 65% POLYESTER 35% COTTON **COLOR:** BK, CH, KH, NV



WOMEN INDUSTRIAL WORK SHIRT

TWO-PIECE, LINED COLLAR WITH SEW-IN STAYS
FIVE-BUTTON FRONT WITH GRIPPER AT NECK TWO
BUTTON-THRU, HEX-STYLE POCKETS WITH
BARTACKED PENCIL STALL ON LEFT POCKET SQUARED
BOTTOM HEM CAN BE TUCKED IN OR LEFT OUT
4.25 OZ. POPLIN, 65% POLYESTER
35% COTTON SS/LS (REG) S-4XL
COLOR: BK-BLACK, LB-LIGHT BLUE,
MB-PETROL BLUE, NV-NAVY, WH-WHITE



WOMENS POPLIN DRESS SHIRT

FEMALE SILHOUETTE TWO-PIECE, LINED, BANDED, BUTTON-DOWN COLLAR
SEVEN WOOD-TONE BUTTON FRONT BOX-PLEATED BACK * TAILORED SLEEVE
PLACKET ON LONG SLEEVE - SS / LS 4.25 OZ. POPLIN, 65% POLYESTER
35% COTTON **COLOR:** BK, BY, KH, LB, NV, RB, RD, WH



WOMENS PLEATED TWILL SLACKS

TAILORED CLASSIC RELAXED FIT
WITH STRAIGHT LEG STYLING
HOOK-AND-EYE CLOSURE*
DOUBLE FRONT PLEATS TWO
FRONT POCKETS AND ONE SET-IN
HIP POCKET ON RIGHT WITH
BUTTON CLOSURE 7.5 OZ. TWILL,
65% POLYESTER / 35% COTTON
SIZE 4-22

COLOR: BK, KH, NV



WOMENS EXECUTIVE OXFORD DRESS SHIRT

TWO-PIECE, LINED, BANDED, BUTTON DOWN COLLAR * SEVEN-BUTTON
FRONT * ONE HEMMED, SPADE-STYLE POCKET WITH TRIANGULAR
STITCHED CORNERS * SEPARATE TWO-PIECE, TOPSTITCHED YOKE*
BOX-PLEATED BACK * TAILORED SLEEVE PLACKET 60% COMBED COTTON
40% POLYESTER SIZE (REG) 2-26

COLOR: GY, WH, BS- BLUE/WH STRIPE, LB, WH



WOMENS ELASTIC INSERT WORK PANT

BEND, STRETCH AND TWIST IN
COMPLETE COMFORT EASY FIT
SELF-FABRIC WAISTBAND WITH
SIDE ELASTIC WAIST INSERTS*
TWO FRONT POCKETS AND TWO
SET-IN HIP POCKETS; LEFT POCKET
HAS BUTTON CLOSURE SLIGHTLY
TAPERED LEG * WHITE HAS HOOK-AND-EYE
CLOSURE AT WAIST AND NO BUTTON AT LEFT
HIP POCKET 7.5 OZ. TWILL, 65% POLYESTER
35% COMBED COTTON SIZE 4-28

COLOR: BK, CH, KH, NV, WH W L





PERMA-LINED PANEL JACKET

Permanently lined with black quilted lining ° Two-piece, topstitched collar with sewn-in stays ° Two lower inset, on-seam pockets and utility pocket on left sleeve ° Hip-length

COLOR: BK, BN, CH, NV, SG



TEAM JACKET

Permanently lined with black quilted lining ° Rib knit collar, cuffs and waistband ° Two lower inset slash pockets and utility pocket on sleeve ° Mid length 7.25 oz.

Twill Shell: 65% Polyester / 35% Cotton

COLOR: BK, CH, NV, SG



SLASH POCKET JACKET

Permanently lined with black quilted lining ° Two-piece, topstitched collar with sewn-in stays ° Two lower inset slash pockets and utility pocket on left sleeve ° Two-button side waist adjustment ° Waist-length 7.25 oz. Twill Shell: 65% Polyester / 35% Cotton

COLOR: BK, BN, CH, NV, SG



BLENDED DUCK JACKET

Black quilted lining ° Lined hood with toggle closure ° Front handwarmer pockets ° Gored sleeves for ease of movement ° Elastic waistband ° Soil release with wicking 10 oz. Duck Shell: 65% Polyester / 35% Cotton

COLOR: BD, ND



COVERALL

Gripper at top of zipper and lapel ° Two set-in front pockets ° Patch hip and chest pockets and rule pocket on right leg ° Two-way brass zipper ° Hemmed sleeves 7.25 oz. Twill, 65% Polyester / 35% Cotton

COLOR: BK, BN, CH, NV, OR, SG, WH

Coverall – 100% Cotton (not shown)

Button front

COLOR: – Herring Bone, NV, PB, WH



HI-VISIBILITY T-SHIRT

360° visibility with front and back 2" silver reflective striping° Rib knit collar and cuffs ° Cover seaming throughout garment ° Single chest pocket ° This product complies with Class 2 Level 2 requirements of ANSI ISEA 107-2010
5.6 oz. Jersey, 100% Polyester



Type R Class 2 – Ripstop Color Block Shirt

360° visibility with front and back 2" silver reflective striping, Industrial-friendly ripstop fabric, Color block design, Two piece, lined collar with sewn-in stays, Button-front closure, Two button-thru, hex-style chest pockets with pencil stall in, UPF 40 rating This product complies with Class 2 Level 2 requirements of ANSI ISEA 107-2010



Enhanced Visibility Industrial Work Shirt

Two piece, lined collar with sewn-in stays° Button front closure ° Two button-thru, hex-style pockets with left pencil stall ° 2 ½" Yellow / Silver / Yellow enhanced visibility trim around body below pockets, down both sleeves and across back shoulder to shoulder ° This product does not comply with ANSI 107-2004 or ANSI 107-2010
4.25 oz. Poplin, 65% Polyester / 35% Cotton



Enhanced Visibility Cargo Pant

Traditional easy fit° Folder set waistband with button closure for a comfortable fit° Slack-style front pockets and two set-in hip pockets° Two bellow cargo pockets with pocket flaps and snap closures ° Two 2 ½" Yellow / Silver / Yellow enhanced visibility trim above knees° This product does not comply with ANSI 107-2004 or ANSI 107-2010 7.5 oz. Twill, 65% Polyester 35% Cotton
COLOR: EN



Enhanced Visibility Perma-Lined Jacket

Permanently lined with black quilted lining ° Two-piece, topstitched collar with sewn-in stays ° Two lower, inset, on-seam pockets ° Hip length ° 2 ½" Yellow / Silver / Yellow enhanced visibility trim down both sleeves, across chest above pockets and two stripes across back ° This product does not comply with ANSI 107-2004 or ANSI 107-2010
7.25 oz. Twill, 65% Polyester / 35% Cotton
COLOR: EC, EN



ENHANCED VISIBILITY, HI-VISIBILITY



Century Linen & Uniform offers a large selection of Flame Resistant Shirts, Pants, Jeans & Jackets. When you need the choice of style, comfort & safety - don't compromise your options. Call your Century Rep. Today to see the many options available & let us help you; "Work Hard, Be Prepared & Look Good"



UNIFORM SHIRTS

Flame Resistant, Banded Topstitched Collar. Topstitched Cuffs with Adjustable Button Closures. Placket Front with Button Closure. Tailored Sleeve Placket. Many styles & ratings available. Ask your Century rep about options



TAGLESS T-SHIRTS

Men's Short Sleeve Rib knit crewneck-style collar and hemmed sleeves. Tagless brand label and warning label. Fabric: Flame-resistant, 6.25 oz. (210 g/m²) Interlock FR, 100% Cotton Protection: Arc Rating ATPV 9.6 calories/cm² Colors: Grey (GY), Navy (NV), Orange (OR)



HENLEY SHIRT

Three-button placket. Knit henley collar. Rib knit cuffs. Tagless brand label and warning label. Fabric: Flame resistant, Many styles & ratings available. Ask your Century rep about options
Colors: Grey (GY), Khaki (KH) Light Blue (LB), Navy (NV), Orange (OR)



DENIM JEAN

One-piece waistband with metal button closure (metal is not exposed to the skin). New, soft pre-wash and sanded fabric for modern and comfortable look. Many styles, fits, finishes, & ratings available. Ask your Century rep about options



WORK PANTS

Flame Resistant, Waistband with Button Closure. Two Slack-Style Front Pockets. Left Hip Ppocket with Button Closure Many styles & ratings available. Ask your Century rep about options
Colors: Charcoal (CH), Khaki (KH), Navy (NV), Visual Green (VG)

**ENTRANCE MATS**

100% nylon pile, Durable slip-resistant styles, Control dust, dirt, moisture Helps keep work spaces and entrances professional looking. Nylon pile bonded to Nitrile rubber backings. : 3' x 5', 3' x 10', 4' x 6'



- COMFORT-FLO MATS
- SCRAPER MATS
- ANTI-FATIGUE MATS



- LOGO MATS
- MESSAGE & MARKETING MATS
- SAFETY MESSAGE MATS

**WET MOPS**

Perfect for scrubbing, damp mopping and all purpose cleaning. Blended yarns provide excellent durability and absorption.

**DUST MOP**

Picks up dust like a magnet. Ideal for all uses 22", 36", 48", 60"

**MICROFIBER WET MOP PAD**

Our Microfiber Wet Mop Pad glides over smooth surfaces for quick and efficient cleaning. Simply drop the pad on the floor and stick it to the mop with the easy-locking hook and loop surfaces

**MICROFIBER LOOP WET MOP**

This lint free mop has the ability to grab dirt and not let go! The super absorbency is great for cleaning up spills without pushing the mess around.

**MICROFIBER DUST MOP**

Our microfiber Dust Mop attracts negatively charged dust particles that normal mops or brooms simply push around.

**RESTROOM SERVICES & SUPPLIES**

You have more important things to worry about...Let us take care of your restroom supplies – like paper towels, soaps, air fresheners, and more! We'll deliver on a recurring frequency so you never run out!

**CENTURY FIRST AID SERVICES**

Let us manage your First Aid program! Flat weekly rate with no extra charges Contains all the items to be in full OSHA ANSI compliance Inventory maintained weekly by Century Linen & Uniform

IS YOUR LAUNDRY PROCESS WORKING TO PREVENT INFECTION ?

Our Healthcare Linen Service programs are designed and accredited to reduce the risk of infection, improve patient comfort and care, as well as reduce waste and environmental impact. Century processes all your linen to meet the highest standards to meet numerous Healthcare Accreditations. See our website to view them all.



WOMEN'S LAB COAT

ONE-PIECE, LINED COLLAR WITH NOTCHED LAPEL * FIVE-BUTTON CLOSURE * DARTS AT SHOULDER FOR SHAPING * LEFT CHEST AND TWO LOWER POCKETS * PRINCESS SEAMS ON BACK * DECORATIVE ADJUSTABLE BELTED BACK * NO SIDE VENTS * 37" BACK LENGTH ON MED 5 OZ. PERFORMANCE BLEND POPLIN, 80% POLYESTER 20% COTTON
COLOR: WH

MEN'S LAB COAT

ONE-PIECE, LINED COLLAR WITH NOTCHED LAPEL * LEFT CHEST POCKET WITH PENCIL STALL AND TWO LOWER POCKETS * SIDE VENT OPENINGS 41 1/2" BACK LENGTH ON ALL SIZES 5 OZ. PERFORMANCE BLEND POPLIN, 80% POLYESTER 20% COMBED COTTON FIVE-BUTTON CLOSURE
COLOR: GY, LB, NV, WH
FIVE-GRIPPER CLOSURE
COLOR: LB, WH



SPECIALIZED LAB COAT

ONE-PIECE, LINED COLLAR WITH NOTCHED LAPEL * FIVE GRIPPER FRONT * SIDE VENT OPENINGS * NO POCKET
41 1/2" LENGTH
80% POLYESTER
20% COMBED COTTON
COLOR: WH



SPECIALIZED CUFFED LAB COAT

SIX-GRIPPER CLOSURE WITH NECK GRIPPER * CHEST POCKET AND LOWER POCKETS * NO SIDE VENTS * POLYESTER KNIT WRIST CUFFS * 41 1/2" LENGTH 5 OZ. PERFORMANCE BLEND POPLIN, 80% POLYESTER 20% COMBED COTTON EXT CHEST POCKET OR INT CHEST POCKET
COLOR: WH



LAPEL COUNTER COAT

ONE-PIECE, LINED COLLAR WITH NOTCHED LAPEL * LEFT CHEST POCKET AND TWO LOWER POCKETS BARTACKED PENCIL STALL* 80% POLYESTER 20% COTTON RB ,RD LB, NV ,WH



SPECIALIZED LAPEL COUNTER COAT

ONE-PIECE, LINED COLLAR WITH NOTCHED LAPEL* TWO LOWER EXTERIOR POCKETS SQUARE-HEMMED FRONT* GRIPPER FRONT 5 OZ. PERFORMANCE BLEND POPLIN, 80% POLYESTER 20% COTTON COLOR: WH



PATIENT GOWNS

WE CARRY PATIENT GOWNS FOR EVERY TYPE OF PATIENT CLASSIC STYLING AVAILABLE IN SEVERAL SIZES, COLORS & PRINTS. STANDARD GOWNS, MAMMO GOWNS, IV GOWNS, OVERSIZED GOWNS PEDIATRIC GOWN, ISOLATION GOWNS



SIMPLY SOFT BRUSHED POPLIN SCRUBS

THE SIMPLY SOFT SCRUB COLLECTION, FROM FASHION SEAL FEATURES A BRUSHED POPLIN FABRIC AND INCORPORATES EVERYTHING YOU WOULD EXPECT IN A MODERN DAY SCRUB. FROM MOISTURE WICKING SIDE PANELS TO ENHANCED FABRIC TO STYLISH DETAILS LIKE CARGO STYLE BOTTOMS, YOU WON'T BE ABLE TO GET ENOUGH OF THIS COLLECTION. MANY STYLES & COLORS AVAILABLE



UNISEX SCRUB TOPS AND BOTTOMS

- REVERSIBLE
- V-NECK
- LEFT CHEST POCKET
- PANT HAS A DRAWSTRING, ONE BACK POCKET

COLORS: ROYAL, NV, CEIL BLUE, TEAL, JADE GR (OTHER COLORS AVAIL.)

PROFESSIONAL C.O.G. LAUNDRY SERVICES FOR FINE HOTELS

CENTURY HAS PROVIDED LINEN SERVICES FOR THE PAST 100 YEARS. WE RECOMMEND COG (CUSTOMER OWNED GOODS) LAUNDRY SERVICE FOR HOTELS, AND WE MAKE OUTSOURCING YOUR LAUNDRY SERVICE TO US COST EFFECTIVE VS RUNNING AN IN-HOUSE LAUNDRY. CALL YOUR CENTURY REP TODAY TO FIND OUT MORE.



STANDARD LINEN

- 50% COTTON 50% POLYESTER, 180 THREAD COUNT SINGLE-PLY
- RING SPUN CONSTRUCTION FOR STRETCH, SMOOTHNESS AND SOFTNESS
- 2X2 HEM ON SHEETS
- 3X3 HEM ON PILLOW CASES
- FITTED AND FLAT SHEETS AVAILABLE



LUXURY LINEN

- 60% COTTON 40% POLYESTER, 250 THREAD COUNT
- 10 MM SATIN STRIPE
- RING SPUN CONSTRUCTION FOR STRETCH, SMOOTHNESS AND SOFTNESS
- FITTED AND FLAT SHEETS AVAILABLE,

HEALTHCARE LINEN



SINGLE SHEETS

HYDROGEN PEROXIDE BLEACHED FOR WHITER COLOR AND SOFTER FEEL OUTSTANDING COMFORT AND DURABILITY LONG WEARING AND WRINKLE-RESISTANCE PROVIDES A CLEAN, CRISP APPEARANCE



PILLOWCASE

ENGINEERED FROM PROPRIETARY 100% SYNTHETIC FIBERS FOR COMFORT AND DURABILITY & DELIVERS LASTING WHITENESS, REDUCED STAINING AND MINIMAL SHRINKAGE



DRAW SHEETS

THESE DRAW SHEETS WILL PROVIDE YOUR PATIENTS UNSURPASSED COMFORT



THERMAL BLANKET

BETTER DURABILITY COMPARED TO TRADITIONAL THERMALS, WHICH SAVES MONEY OVER TIME TIGHT WEAVE PREVENTS SNAGS AND PROVIDES OUTSTANDING WARMTH



UNDERPADS

EXTRA ABSORBENT UNDERPADS ARE DESIGNED FOR MODERATE TO HEAVY INCONTINENCE. BEST PROTECTION AGAINST MOISTURE DAMAGE TO MATTRESSES AND BEDDING.



BATH BLANKET

UNBLEACHED BATH BLANKETS MADE FROM EXCEPTIONAL YARNS NAPPED ON BOTH SIDES FOR A SOFT FLANNEL SURFACE WITH MINIMAL PILLING SOFT, WARM, COMFORTABLE AND HIGHLY ABSORBENT



LINEN & UNIFORM

SINCE 1915

WHY CHOOSE CENTURY LINEN & UNIFORM?

Well, at Century Linen & Uniform we don't just sell our customers products. We partner with our customers to provide them benefits & solutions to enhance their image & increase their business longevity. Our weekly service helps our customers keep their employees looking sharp & their establishments look clean, crisp & inviting. We've been helping our customers, impress their customers since 1915!

FAMILY OWNED AND OPERATED

As a multi-generational, family-owned company, we have forged partnerships with our customers. And we personalize service to your needs. We are an independent company, not a national chain. We support local families & we re-invest into our local economy.

OVER 100 YEARS IN BUSINESS

Since 1915 Century has thrived by serving customers effectively and courteously. Generations have trusted Century for Table Linen, Restaurant needs, uniform rentals, mats, custom apparel, safety products, restroom supplies and more. We're a stable company and have grown and prospered through changing economic times. We continuously reinvest in our employees, equipment and facilities to improve performance and ensure success for our customers.

EVERYTHING YOU NEED

We offer convenient one-stop shopping of uniform rental, dust control, safety apparel, restroom supplies, and linen supply.

MULTI SERVICE LEVELS

Your account is serviced to the highest standards through the checkpoints of our multiple service levels from the RSR who you see every week; to our in office customer service reps who you will be able to reach by phone not an answering machine.

RFID TRACKING CHIPS

Each of your garments has an RFID tracking chip in it. RFID ends garment delivery inaccuracies. At Century we know exactly what should be returned. If we misplace it, we replace it. We also help you control your apparel program by providing on demand reports of inventory, employee usage and abuse, cleaning and replacement history, and more

CUSTOMER PORTAL

Our Customer portal allows you full access to your account, to pay online, order online and report on inventory and costs.

NO SHORTAGE GUARANTEE

We know you need your products & we guarantee you will get your products in full for the week or its free!

OUR SERVICE PROMISE

We work hard to keep our customers happy & we guarantee our service in writing! If you have a problem that we don't take care of within a specified time period, you get to cancel your service with us. It's that simple!

UNIFORM RENTAL MARKET



LINEN RENTAL MARKET





LINEN & UNIFORM
SINCE 1915

Work Hard, Be Prepared, Look Good



LOCATIONS

Gloversville, NY | Johnstown, NY

Albany, NY | Syracuse, NY | Potsdam, NY